

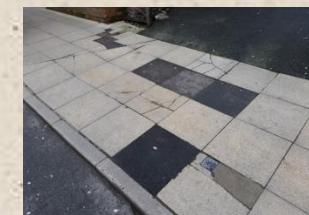
Appendix A

Castle Street:

- Coloured resurfacing would greatly enhance the street
- Mismatched street furniture (e.g. bollards)
- Maintenance issues
- 'Temporary' tarmac repairs
- Patchwork of paving
- Signage to be removed/replaced if poor quality
- Mix of signage
- Lanterns to replace 'mix' of heads on lampposts
- Decluttering of street furniture
- Market Traders making street look poor (vans left in road, stock on road etc.)
- Maintenance issues (e.g. repairs to paving)
- Good quality, restored bollards at top of Castle Street – although different bollards at the bottom
- Signage to be reviewed
- Poor quality surface
- Poor quality markings
- 'No Entry' faded
- New markings on roadway entrance would enhance the area
- Railings on either side of entrance to paint
- Planters at top of Castle Street
- Poor quality repairs (e.g. paving and lighting)
- Painting of street furniture



Castle Street



Exchange Street



Market Place



Mill Street



Mill Street:

- To continue Market Place quality down Mill Street would be too expensive
- Maintenance issues – drainage/damaged grids
- Possible 'feature' could be made of Back Wall Gate entrance/area
- Street furniture recently painted
- More bespoke furniture could improve area
- Layout of street furniture poor – to review
- Maintenance issues
- Significant lighting improvements would greatly enhance all of Mill Street
- Maintenance issues – giving poor image of the town
- Dead trees in pits to be replaced
- Temporary tarmac in tree pits to be replaced with new trees

Exchange Street:

- Very poor quality public realm
- Deprived impression
- General feeling of neglect
- Mix of street furniture
- Old, dated bins
- Poor bollards mixed with good bollards – that need restoring/painting
- Poor landscaping
- Poor quality paving
- Poor 'modern' street furniture
- To completely renovate this busy area with new paving, landscaping, street furniture and lighting

Exchange Street Car Park

- Poor landscaping
- Poor 'modern' street furniture
- Good bollards but need restoring/painting
- Poor quality paving
- Deprived impression
- To completely renovate this busy area with new surfacing, lining, paving, landscaping, street furniture and lighting